



Fundamentor improves aptitude by developing math (quantitative), English (verbal), logical reasoning (inference) & creativity (creative thinking) skills

CLASS 3 SAMPLE QUESTIONS

CLASS 4 SAMPLE QUESTIONS

CLASS 5 SAMPLE QUESTIONS

CLASS 6 SAMPLE QUESTIONS

CLASS 7 SAMPLE QUESTIONS

CLASS 8 SAMPLE QUESTIONS

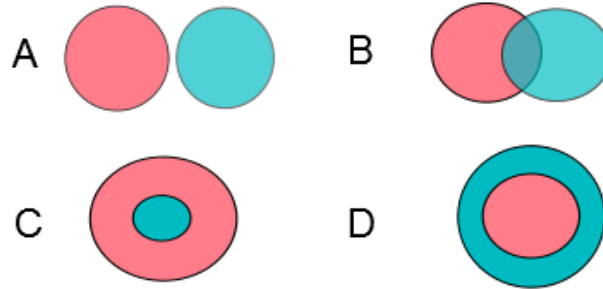
CLASS 9 SAMPLE QUESTIONS

SAMPLE QUESTIONS

CLASS – 3

Select the answer choice against each question

QUESTION 1: Lions are shown as a green circle and animals are shown as a red circle. Which figure best shows the relationship between lions and animals?



1. Figure A	
2. Figure B	
3. Figure C	
4. Figure D	

QUESTION 2:

I skated for 90 minute after starting at 7:00 PM. What time did I end skating?

1. 8:00 PM	
2. 8:15 PM	
3. 8:30 PM	
4. 9:30 PM	

SAMPLE QUESTIONS

QUESTION 3:

Which of the following words will come second in a dictionary?

1. EAST	
2. WEST	
3. NORTH	
4. SOUTH	

QUESTION 4:

Which of the following can be concluded based on the attached picture?

Statement 1: The office worker gets up at 6 am

Statement 2: The office worker tries to sleep at 10 pm



1. Only statement 1 is true	
2. Only statement 2 is true	
3. Both statements are true	
4. Both statements are false	

SAMPLE QUESTIONS

CLASS – 4

Select the answer choice against each question

QUESTION 5: If "CLEAR" is coded as "CAELR" what is the code for "SPOON"?

1. NPOOS	
2. SPOON	
3. SOOPN	
4. SOPON	

QUESTION 6:

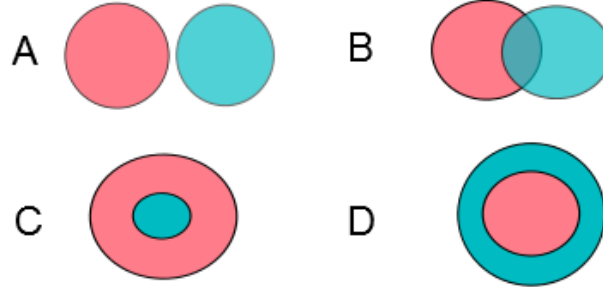
If today is Saturday, what day will it be 4 days later?

1. Tuesday	
2. Thursday	
3. Wednesday	
4. Friday	

SAMPLE QUESTIONS

QUESTION 7:

Boys are shown as a red circle and artists are shown as a green circle. Which figure best shows the relationship between boys and artists?



1. Figure D	
2. Figure C	
3. Figure B	
4. Figure A	

QUESTION 8:

India is behind Thailand time by 1 hr 30 min. If its 10:30 am in Thailand, what time is it in India?

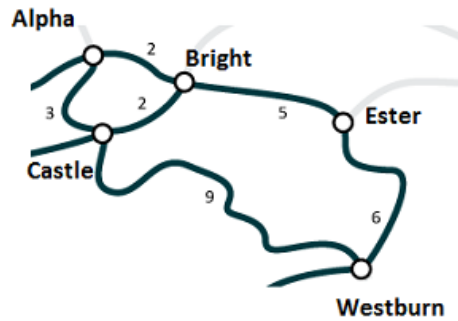
1. 9:00 PM	
2. 9:15 PM	
3. 9:00 AM	
4. 9:30 PM	

SAMPLE QUESTIONS

CLASS – 5

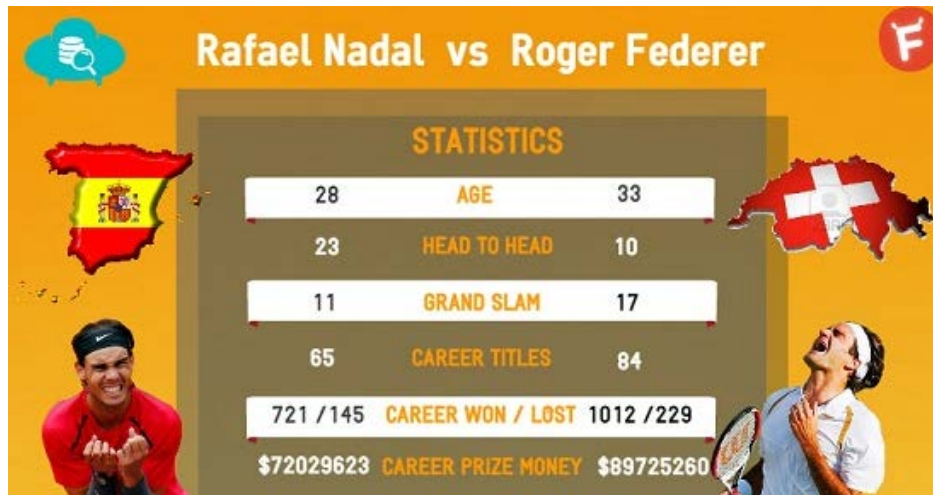
Select the answer choice against each question

QUESTION 9: The picture below shows the distance in kilometres between different suburbs in a city. Which suburb is closest to Westburn?



1. Castle	
2. Bright	
3. Alpha	
4. Ester	

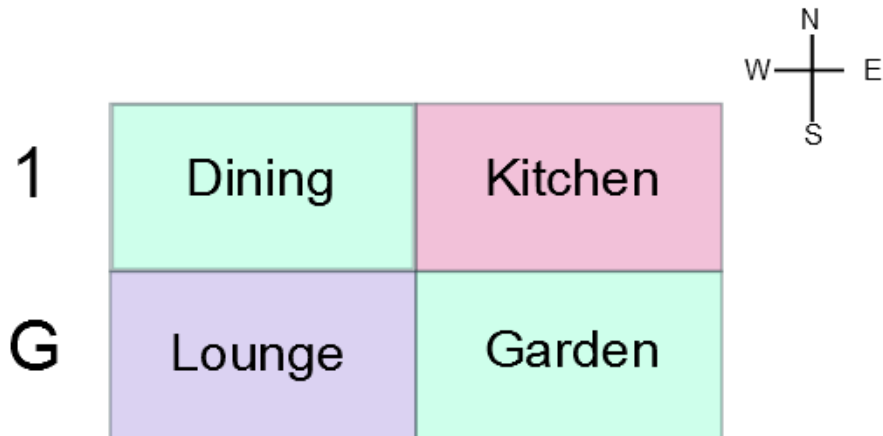
QUESTION 10: Who has won more matches and how many more than the other in a head to head?



1. Nadal, 11	
2. Federer, 13	
3. Nadal, 23	
4. Nadal, 13	

SAMPLE QUESTIONS

QUESTION 11: Refer to the attached house layout. What is east of Dining on the same floor?



1. Kitchen	
2. Lounge	
3. Garden	
4. None of these	

QUESTION 12: If 'COBRAS' is written as 'RASCOB' in a code, how would you write 'VIPERS' in the same code?

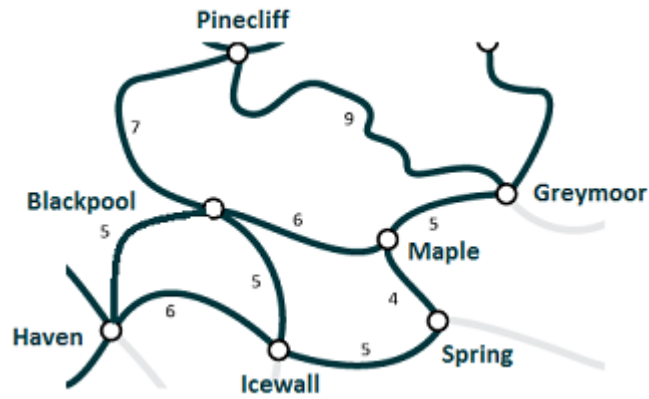
1. SREPIV	
2. SERVIP	
3. ERSVIP	
4. ERSPIV	

SAMPLE QUESTIONS

CLASS – 6

Select the answer choice against each question

QUESTION 13: The picture below shows the distance in kilometers between different suburbs in a city. Which suburb is closest to Pinecliff?



1. Blackpool	
2. Greymoor	
3. Maple	
4. Icewall	

QUESTION 14: Pick the odd word out

1. Clean	
2. Clear	
3. Spotless	
4. Polluted	

SAMPLE QUESTIONS

QUESTION 15: Lisa wants to travel to Europe. She has to choose from one of the travel options. Which country will she definitely visit irrespective of the itinerary she chooses?

Itinerary1: Hungary, UK, France

Itinerary2: UK, France, Switzerland

Itinerary3: UK, Germany, Austria

1. UK	
2. Austria	
3. France	
4. Germany	

QUESTION 16: India is ahead of New York by 9 hrs 30 minutes. If its 5 pm in New York, what time is it in India?

1. 2:30 AM	
2. 12:30 PM	
3. 8:30 PM	
4. 9:30 PM	

SAMPLE QUESTIONS

CLASS – 7

Select the answer choice against each question

QUESTION 17: If 'carpet' is called a 'pillow', 'pillow' a 'mat', 'mat' a 'carpet', what do you rest your head on?

1. Cushion	
2. Pillow	
3. Mat	
4. Carpet	

QUESTION 18: The average runs scored by 11 players in a team were 25. If the first 8 players scored 250 runs, how many runs were scored by the remaining 3 players?

1. 15	
2. 20	
3. 30	
4. 25	

SAMPLE QUESTIONS

QUESTION 19: Choose the best word among 4 synonyms to replace the word tactic in the sentence.

“The beggar's tactic is to ask strangers for money, while bursting into tears”

1. path	
2. course	
3. ruse or ploy	
4. device	

QUESTION 20: Brad has 4 friends. He goes to the market to buy a pack of candies that he can distribute equally between his friends. The shop has the following options for candy packs. Which pack should Brad buy?

1. 544	
2. 538	
3. 542	
4. 550	

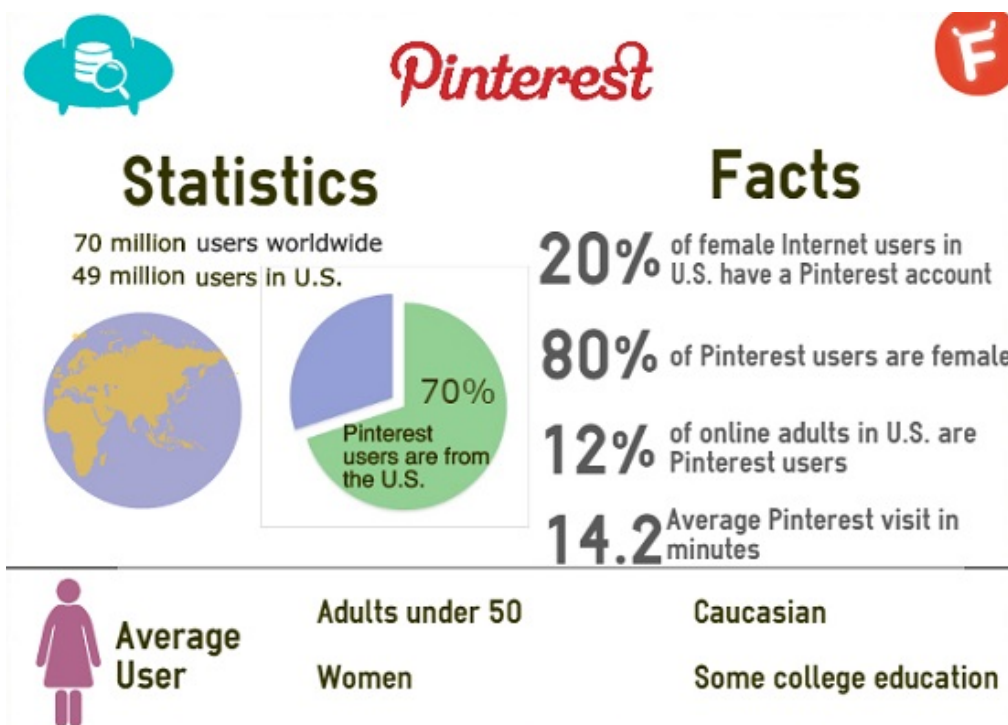
SAMPLE QUESTIONS

CLASS – 8

Select the answer choice against each question

QUESTION 21: Which of the following statements is false?

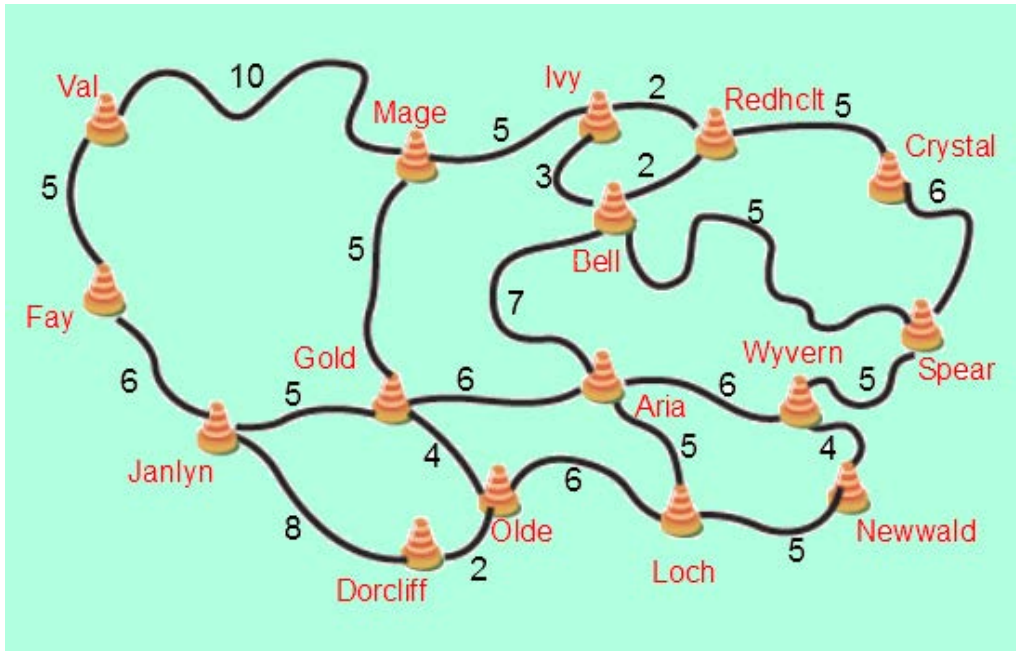
1. 14.2 minutes is average Pinterest visit in minutes	
2. An average user is Asian	
3. Pinterest has 49 million users in US	
4. 80% of Pinterest users are females	



SAMPLE QUESTIONS

QUESTION 22: The picture below shows the distance in kilometers between different suburbs in a city.

Which suburb is closest to Aria?



1. Bell	
2. Gold	
3. Loch	
4. Wyvern	

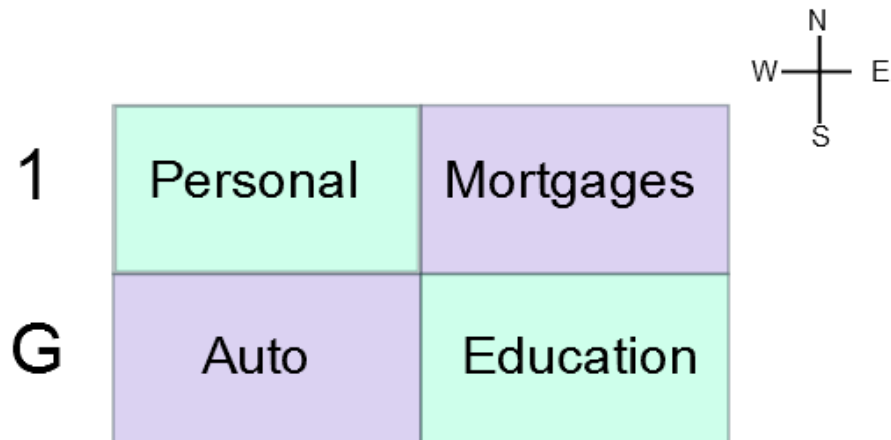
QUESTION 23: Choose the meaning of the word AIR closest to the way it is used in the sentence.

“The teacher aired her views in the class”

1. atmospheric gases	
2. make known	
3. mode of transport	
4. manner	

SAMPLE QUESTIONS

QUESTION 24: The layout of a bank is as shown in the graphic. Which of the following statements is false?



1. Mortgages and Auto sections are diagonally located	
2. Personal section is to the south of Auto section	
3. Both	
4. None	

SAMPLE QUESTIONS

CLASS – 9

Select the answer choice against each question

QUESTION 25: A cryptanalyst discovers that 2134 in a code language means a 'BEAR' and 94761 means a 'CRONE' and 'CORNER' is 974614, what is the code for '**CRAB**'?

1. 9432	
2. 9731	
3. 9721	
4. 9821	

QUESTION 26: What is the most useful data to estimate the number of mobile phones in use in a country?

1. The number of mobile operators in a country	
2. The number of active mobile phone subscribers, accounting for proportion	
3. Number of mobile phone brands available in the country	
4. The market share of the market leader of mobile phones in the country of dual SIM sales as a percentage of total sales	

SAMPLE QUESTIONS

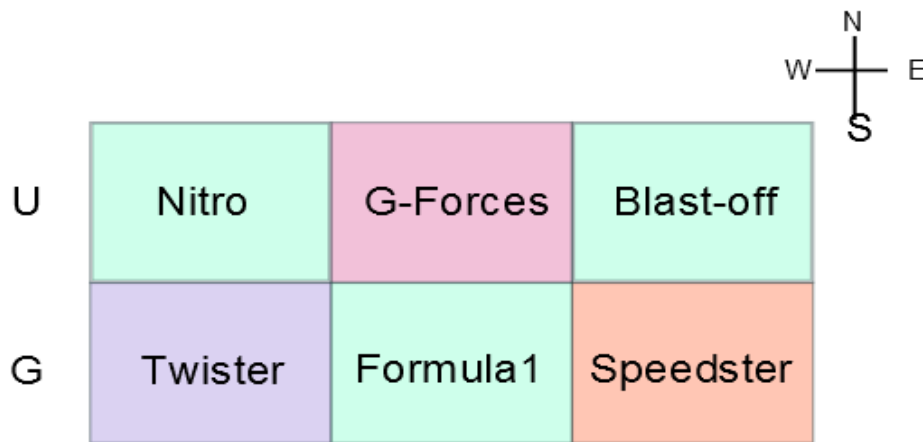
QUESTION 27: Replace the selected word(s).

The Russian tundra "is a completely spotless area that's never been touched"

1. is a stainless place	
2. is a sanitary terrain	
3. is a sterilized area	
4. is a pristine environment	

QUESTION 28: A roller-coaster has 6 types of rides, located as shown in the figure are managed by 6 persons Andy, David, Jay, Ed, Earl, Jack. Each ride is managed by one person.

- Speedster is assigned to Andy.
- David and Jay are on the same floor but David is to the west of Jay.
- Earl and Ed are on the same floor but Earl is to the east of Ed.
- Ed is directly above Jay.



Who manages Blast-off?

1. Earl	
2. Ed	
3. David	
4. Jay	

ANSWERS

Class 3

1. All lions are animals. So all lions circle will completely come inside all animals circles
2. 90 minutes = 1 hr and 30 minutes. $7 \text{ pm} + 1:30 = 8:30 \text{ pm}$
3. East-North-South-West is the correct sequence in a dictionary
4. As per the attached figure, both statements are true.

Class 4

5. The 2nd and 4th letter are interchanged.
6. Saturday is day 6 of the week.
7. Not all boys are artists and not all artists are boys. So boys may be artists though so Figure B is correct answer
8. As India is behind, time in India is $10:30 - 1:30 = 9:00 \text{ AM}$

Class 5

9. The direct neighbors of Westburn are Ester and Castle. Ester is 6 kms away and Castle is 9kms away. So, Ester is the closest.
10. Rafael Nadal has won more. He has won 23 and lost 10. So, he has won 13 more matches.
11. Kitchen is east of Dining.
12. The first three letters become the last three letters and vice versa

Class 6

13. The direct neighbors of Pinecliff are Blackpool and Greymoor. Blackpool is 7 kms away and Greymoor is 9 kms away. So, Blackpool is the closest.
14. Polluted means dirty whereas rest of the choices mean clean.
15. UK is common between all itineraries
16. $5 \text{ pm} + 9:30 = 2:30 \text{ AM}$

Class 7

17. Each word is substituted by a specific word. A pillow is called a mat
18. Total runs scored by 11 players = $11 \times 25 = 275$. $275 - 250 = 25$
19. In the context given, the correct answer is - The beggar's ploy is to ask strangers for money, while bursting into tears.
20. 544 is divisible by 4 as last 2 digits of 544: 44 are divisible by 4

Class 8

21. An average user is Caucasian
22. The direct neighbors of Ivy are Loch at 5 kms, Bell at 7 kms, Wyvern & Gold at 6 kms. So, Loch is the closest.
23. In the context given, the correct answer is - The teacher made her views known
24. Mortgages and auto section are diagonally located. Personal section is to the north of Auto section. So only statement 2 is false

Class 9

25. Each letter is substituted by a specific number. C is 9, R is 4. Only one choice has first two numbers as 9 and 4.
26. Rest of the choices mention about market shares and number of operators/ brands but not about market size

ANSWERS

27. Pristine means a spotless area that's never been touched
28. Earl is assigned Blast-off. Speedster is assigned to Andy. Since Ed is above Jay; Earl and Ed are on the first floor. David, Jay and Andy are on the ground floor. Ed is above Jay and Earl is to the east of Ed. So, Earl is assigned Blast-off